

METALLIC BEVEL TOOL Ø 16

BEVEL TOOL Ø 16

Gauge / Bevel tool made of high quality steel material and engineering plastics, with high damage resistance and durability, meeting the daily pipe installation needs and with a long lifetime.

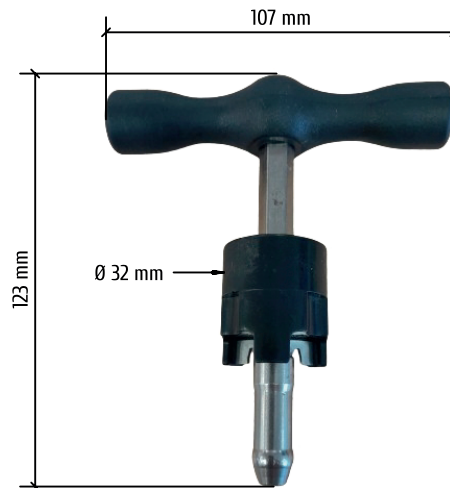
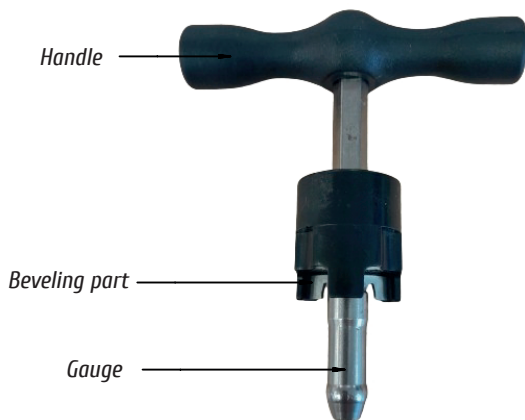
This tool performs two functions at the same time, calibrating the internal cylindrical shape of the Ø16 pipe after cutting Multilayer, PE-Xa and PE-RT pipes. On the other hand, it has a metal bevel part that bevels both - the inside and outside of the pipe, making it easy in one step for the pipes to reach the precision required during installation, saving effort for the user and making the installation more professional.

Its ergonomic handle, made of engineering plastics, has a very high roughness, preventing slipping and saving effort for the user in both- in introducing the pipe and in the beveling operation while spinning the tool, it is comfortable to hold, providing the user a good experience.

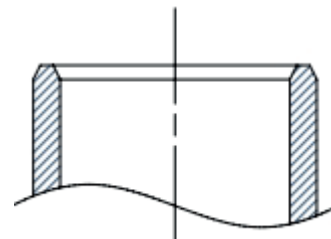


TECHNICAL DATA

Color: Black
Dimensions: 123 x 107 x 25 mm
Weight: 114,2 g



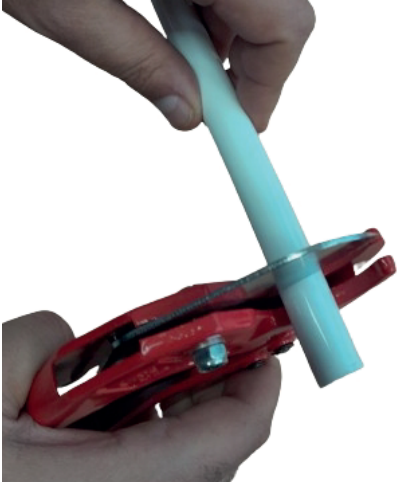
DETAIL OF BEVELING PART



METALLIC BEVEL TOOL Ø 16

USER MANUAL

- 1 Cut the Ø16 pipe with a cutter, making the cut as perpendicular as possible.



- 2 We can see that the pipe has been deformed while cutting, so we proceed to use the gauge / bevel tool.



- 3 Introduce the gauge inside the pipe until it stops against the beveling part.



- 4 Rotate using the handle, holding it tight with the other hand, to be able to bevel the pipe both – internally and externally.

Remove the gauge / bevel tool.

The pipe is ready for installation.

